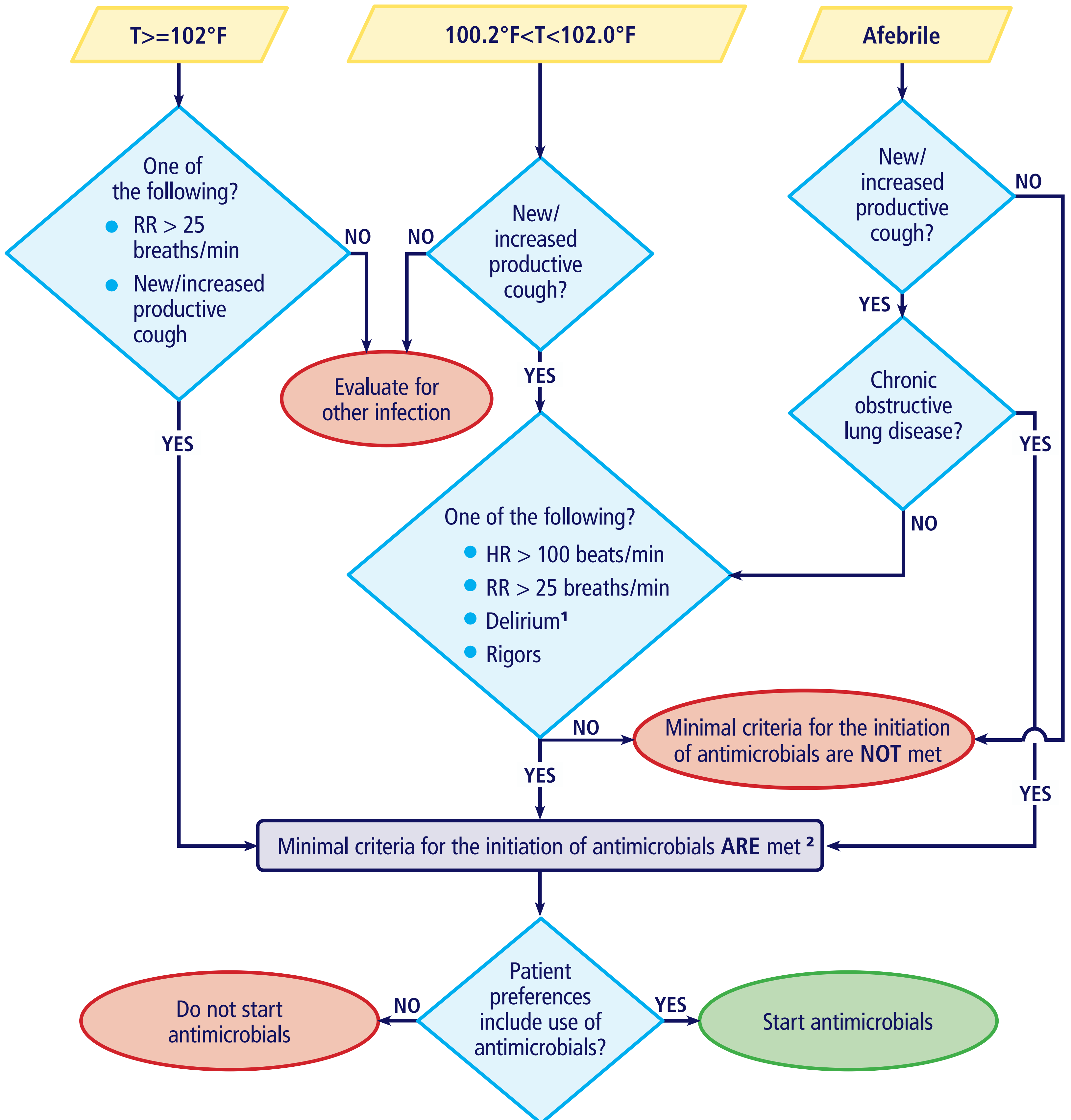


Algorithm for Suspected Lower Respiratory Tract Infection with Moderate to Advanced Dementia

Algorithm is meant as a guideline. Work-up and treatment should be conducted at the discretion of the primary care provider.



¹ The Confusion Assessment Method criteria for delirium requires the following: 1. acute change in mental status with fluctuating course, 2. inattention and 3. EITHER disorganized thinking OR altered level of consciousness. A behavior change (e.g., agitation) alone does not meet criteria for delirium.
² A complete blood count with differential and chest x-ray are not required for empiric antimicrobial treatment. These tests can be uncomfortable to obtain in residents with advanced dementia and should be ordered at the discretion of the primary care provider.