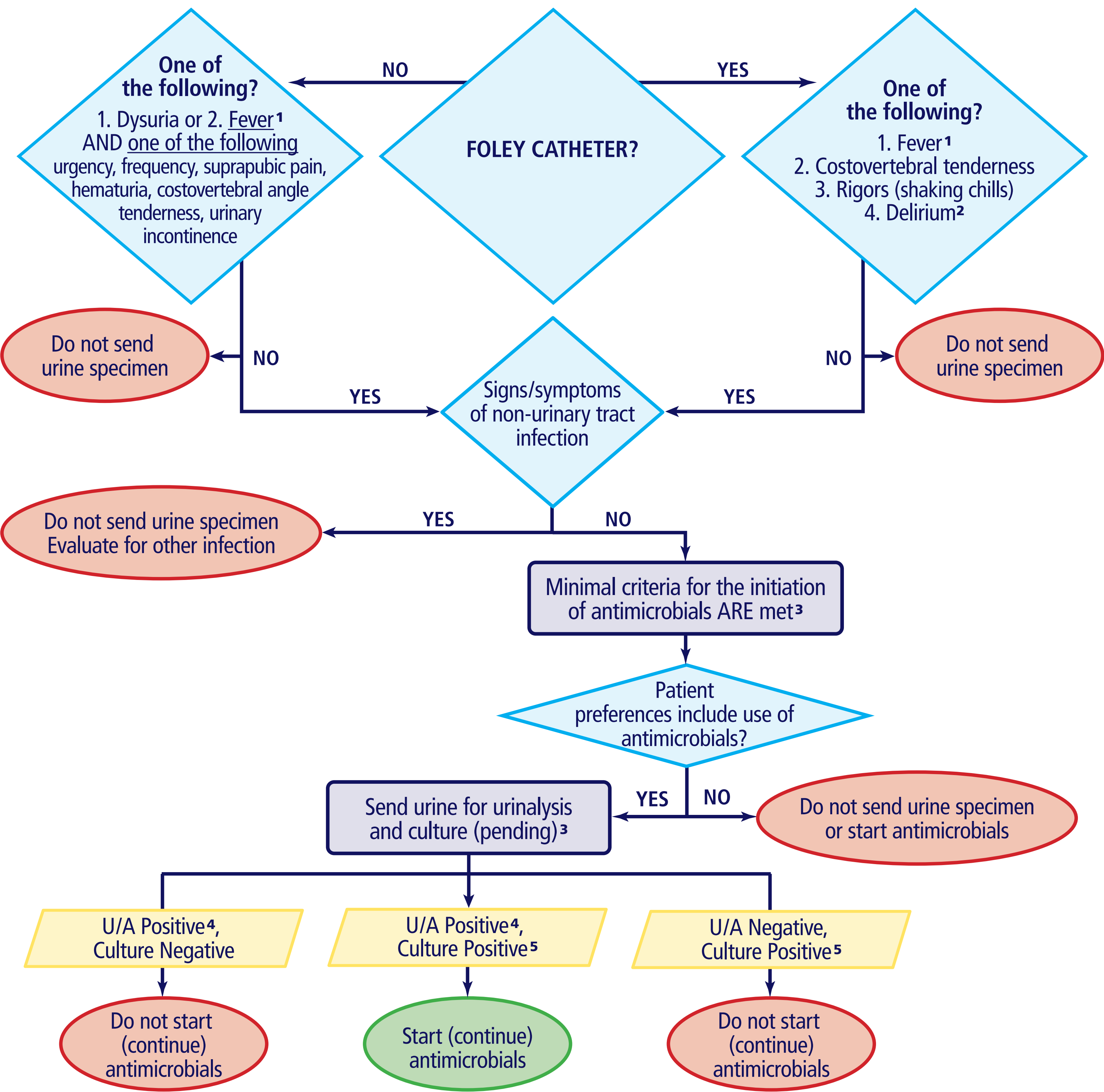


# Algorithm for Suspected Urinary Tract Infection with Moderate to Advanced Dementia

Algorithm is meant as a guideline. Work-up and treatment should be conducted at the discretion of the primary care provider.  
\*Residents with advanced dementia may be unable to communicate dysuria, pain, or urgency. The presence or absence of cloudy or odorous urine alone should not be used as an indication to send a urine specimen or start antimicrobials.



1 Fever Criteria: >100°F [37.8°C], repeat temp >99°F [37.2°C], or 2.0°F [1.1°C] above baseline)  
2 The Confusion Assessment Method criteria for delirium requires the following: 1. acute change in mental status with fluctuating course, 2. inattention and 3. EITHER disorganized thinking OR altered level of consciousness. A behavior change (e.g., agitation) alone does not meet criteria for delirium.  
3 Antimicrobials may be initiated empirically while urine specimen results are pending.  
4 Positive urinalysis => 10,000 white blood cells/L OR positive dipstick = positive white blood cells, leukocyte esterase or nitrites  
5 Positive urine culture: no foley => 105 cfu/ml of at least one bacterial organism; foley => 103 cfu/ml